

Environmental Policy

Framework

The Ambuja Cements Limited's Environmental policy is an integral part of the Ambuja Cement policy landscape. This policy should be read in close conjunction with the Ambuja Cement policies and directives listed in Annex 2.

The Environmental policy comprises:

- Scope
- Environment Policy
- Annex 1: Responsibilities
- Annex 2: Ambuja Cement policies and directives related to the Environmental policy

1. Scope

The scope of the Ambuja Cement Environmental Policy covers Ambuja Cements Ltd. and all its operations ("Ambuja Cement").

2. Environment Policy

Concern and consciousness towards environment are embedded in our Environmental Policy which covers all our functions & operations. The structure, process and monitoring have been significantly reshaped in past few years, keeping in view the need of the time and the Company's objectives towards Corporate Sustainability. The effective execution and adherence to the policy principles are accorded high importance in the agenda of the Board of the Company. We commit to:

- Adopt environmentally safe mining and process technologies along with best operating practices for prevention & control of risks and adverse effects of the release of our pollutants to the environment (air, water, and soil) so as to protect health and safety of our employees, contract employees, and community.
- Appropriately rehabilitate/restore/reclaim mines or disturbed areas for overall benefit to community and biodiversity. Quarry rehabilitation plan will be in place for all extraction sites. A Biodiversity Management Plan will be prepared for all extraction sites according to the level of management needed based on the risks and opportunities.

- Optimise use of key resources including minerals, energy, and water.
- Conduct environmental and social impact assessment in selection of greenfield sites or major modifications in the existing sites.
- Conduct analysis of impacts our products and solutions through the Life Cycle Assessment.
- Reduce our impact on climate change by developing, manufacturing or promoting sustainable products and solutions, undertaking energy efficiency and recovery, use of renewable and non-conventional sources of energy, and utilising alternative raw materials and fuels.
- Comply with applicable legal and other requirements including environment and forest clearances, consents, permits, licenses, standards, and leading industry initiatives.
- Implement and maintain environment management systems all across our operations along with monitoring, reporting and continually improving our environmental performance.
- Be reliable provider of sound waste management solutions by co-processing qualified wastes as alternative fuels and alternative raw materials from other industries and waste service providers.
- Promote sustainable water management practices, including efficient water consumption, recycling, treatment and zero wastewater discharge, across all our operations, along with rainwater harvesting to minimize freshwater withdrawal.
- Assess the environmental practices and policies of our critical suppliers as part of selection process and expect them to respect and comply with our environmental policies and procedures.
- Develop and propagate environmental awareness amongst employees and other stakeholders including surrounding communities.

- Set corporate objectives and targets, and monitor our environmental performance.
- Conduct environmental due diligence of all new acquisitions.
- Be open, transparent, and accountable to our stakeholders regarding our environmental performance and periodic reporting. This policy will be communicated to all persons working for or on behalf of the company and will also be made available on the website of the company.

This Policy was approved by Executive Committee of the Company on 20th March 2017 and will come into force on 21st March 2017.

Original dated: 20th March 2017	Revision Dates:
Version dated: 24th September, 2020	
Responsible Executive Committee Member: Vilas Deshmukh, Chief Manufacturing Officer Responsible Person-Name/ Title: Sanjay K Singh - General Manager, Corp Environment and Sustainability	

Annex 1: Responsibilities

1. Organisational structure, roles and responsibilities

1.1. Ambuja Cement Executive Committee:

- The Executive Committee approves creating, changing or suspending this Environmental Policy.
- The Chief Manufacturing Officer is the Executive Committee member responsible for Sustainable Development who submits the creation, changes or suspension of this Environmental Policy to the Executive Committee for approval.

1.2. Corporate Function – Environment and Sustainability:

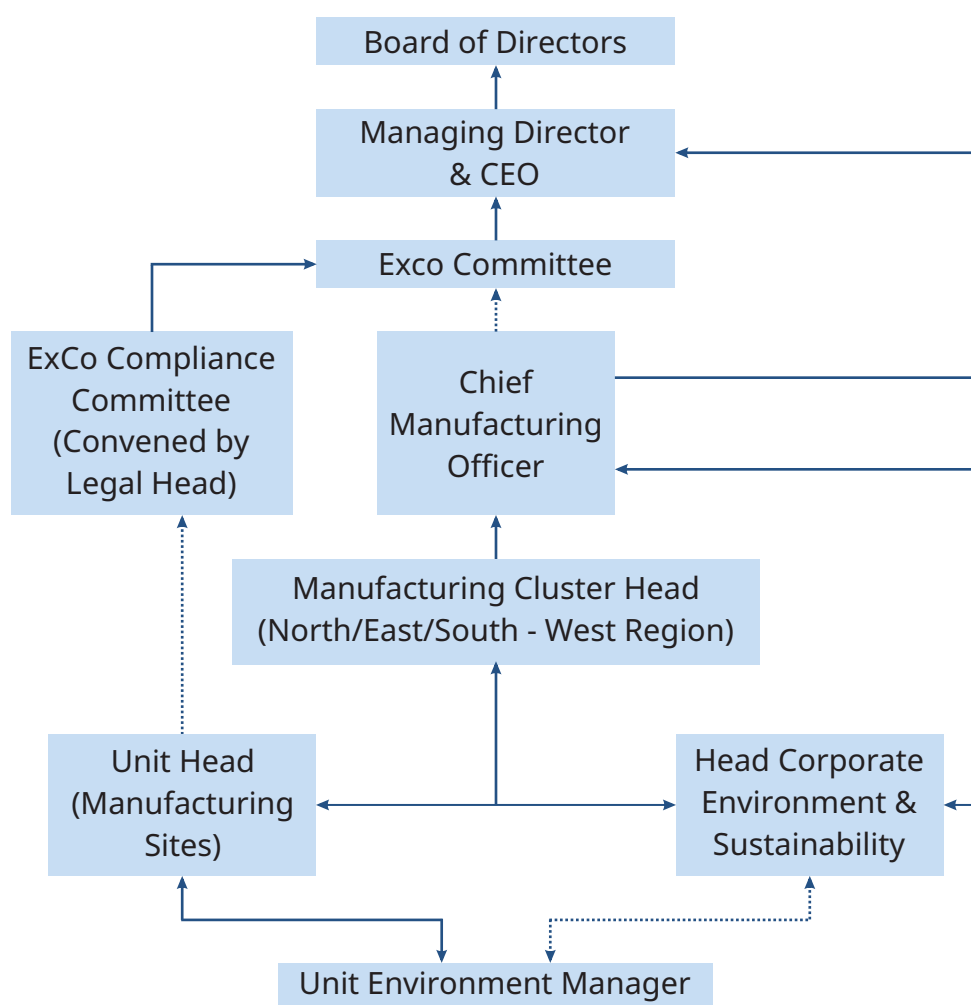
- Proposes amendments to this Policy and associated procedures / guidelines where and when necessary.
- Assists Units (Plants/Operational Sites) in understanding and applying the Environmental Policy and Directives.
- Supports training on the Environmental Policy and Directives.
- Assists Units in solving serious environmental compliance issues and other significant environmental issues.
- Collects feedback from Units with regard to amendments of the Environmental Policy and Directives
- Head (Corp Environment and Sustainability), reporting to the Chief Manufacturing Officer, is responsible for all the activities and to oversee fulfilment of requirements for compliance, co-ordination with environment managers and Unit Heads at respective sites of operation who are directly responsible for ensuring compliance at their respective sites.

1.3. Corporate Sustainability Steering Committee (CSSC):

The Corporate Sustainability Steering Committee reviews the overall sustainability performance and initiatives as well as any potential amendments to the Policy and associated Directives proposed by the Corporate Environment and Sustainability/ other function before submission to the CMO/ Executive Committee.

1.4. Unit / Plant Management:

Unit or plant environmental managers support training on and implementation of the Environmental Policy, Legislation and Directives at the respective unit or sites. They share good practices within their units and promote environmental success stories at Company level. Unit head (UH) ensures that Environment Policy is implemented as per the planned procedure. UH provides all resources to environmental function so that the system of compliance is operated efficiently. UH reports to respective Manufacturing Cluster Head of the organisation who in turn reports to the Chief Manufacturing Officer (CMO), on all important environmental issues including Compliance of Environment/ Forest/Wildlife and Clearances.



1.5. Other Functions:

Implementing the Environmental Policy requires cooperation with the following functions in particular: Manufacturing (including Cluster Heads at regional level) , Legal/Compliance, Internal Audit, Procurement, Finance, Marketing, Risk Management, Health and Safety, Techport, Geocycle, Corporate Affairs, CSR, and Communications.

Exco level Compliance Committee takes a stock of compliance confirmation/ non-compliances regarding all the legal requirements applicable to ACL (including environmental). Head-legal on a quarterly basis presents compliance confirmation to the Board level Compliance Committee headed by an independent Director.

The organisation structure for implementation of Corporate Environmental Policy is as under:

2. Company Level Responsibility

2.1. Company MD and CEO

MD and CEO, at the helm of affairs, is responsible for making sure that Company Environmental Policy fully integrates the principles of the LafargeHolcim Environmental Policy.

He / she delegates responsibilities for implementing initiatives and programs pertaining to this Policy to the concerned functions / persons within the Company.

The MD and CEO is ultimately responsible for implementation of Environmental Policy and for ensuring the conformity.

Annex 2a: Ambuja Cement Policies related to the Environmental policy

Link with Policy	Sustainability Policy CSR Policy Climate Change Policy Green Procurement Policy Health & Safety Policy
-------------------------	--

Annex 2b: Ambuja Cement Directives related to the Environmental policy

Link to The Environmental Policy	Directive
All LH /ACL Directives	LH Cement Environment Directive LH Water Directive LH Quarry Rehabilitation and Biodiversity Directive